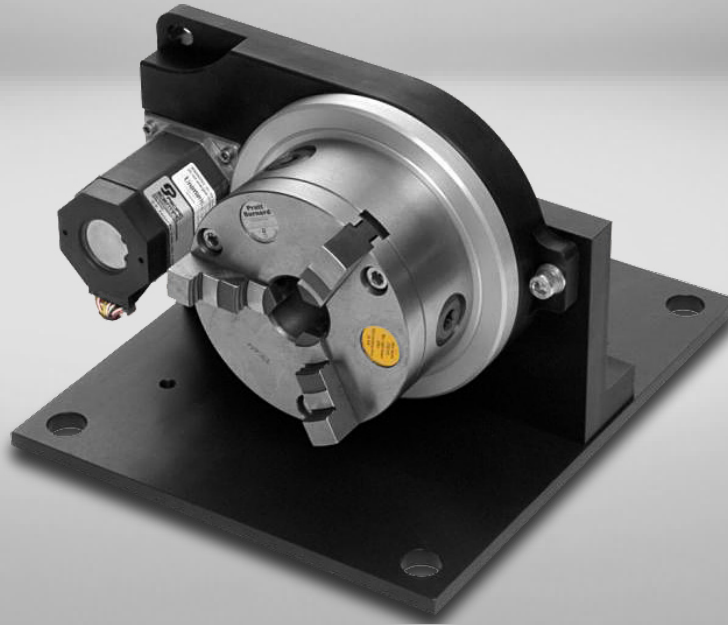


ZD80 Rotary

for Radial Laser Marking



The ZD80 is a robust, rugged rotary axis incorporating a stepper motor with a play-less timing belt and is capable of a 100% duty cycle operation. ZD80 has a 34mm diameter through hole allowing longer components to be marked. When sold independent of a laser or workstation, the ZD80 is supplied with drivers, power supplies and a limit switches. The unit can be supplied with a 3 jaw chuck or with a set of collets for work holding.

Specifications

Reduction Ratio	1:8.1
Drive Revolution	0-120 1/min
Operating Moment	12 Nm
Nominal Holding Torque	20 Nm

Minimum Increment	2.6 Minutes
Weight	24.7 lbs
Standard Chuck Diameter	125mm
Through Hole Diameter	34mm



Industrial Laser Systems

sales@permanentmarking.com

North America, Headquarters

370 Gateway Drive
Chillicothe, OH 45601 • U.S.A.
Phone +1 (740) 779-9918

www.permanentmarking.com